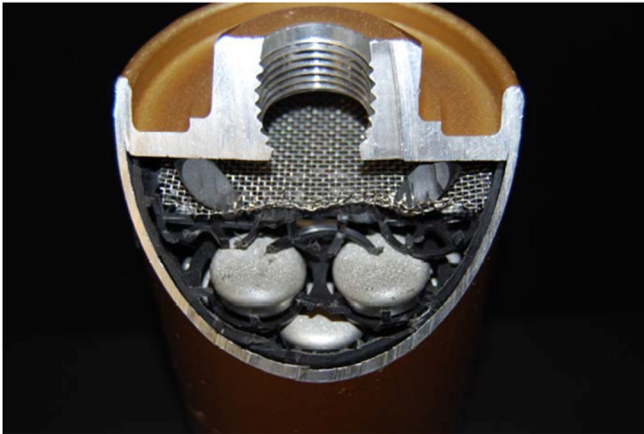


## A Fuel Reformer Increasing Combustion Efficiency



**Reduce your fuel  
consumption**



### Fuel Types

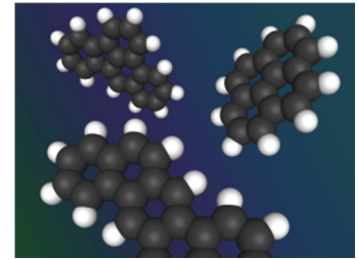
- Diesel
- Bio-Diesel
- MDO
- HFO
- Bunker
- Natural Gas
- Propane

**Reduce your  
emissions**



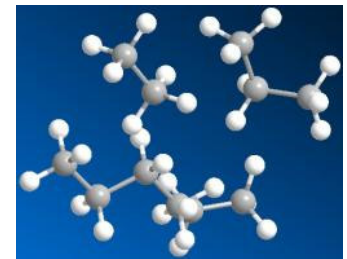
## Effects on Liquid Fuels

- Polynuclear Aromatics reduced
- Aliphatics simultaneously increased
- Increases the H-C ratio
- Cetane number is increased
- Improves Lubricity
- Fitch Fuel Catalyst reverses the natural degrading process of fuels



## Effects on Natural Gas and Propane

- The Fitch Fuel Catalyst process converts the water and non-methane components into molecules with more hydrogen and increase the oxygenation surface which translates into a more efficient combustion



## Features/Specs

- Die-cast aluminum head
- Steel bowl assembly
- Viton "O" ring seal
- Black Powder coated components
- "Locking ring collar" – no V-clamps
- Designed to withstand 150 PSI Maximum temperature with Viton "O" ring 437F/225C
- Manual drain valve
- Manual vent valve
- Warranted for 10,000 operating hours



Contact:

**ECM ECO Monitoring, a.s.**  
Nevädzová 5, 821 01 Bratislava,  
Slovak Republic  
Phone: +421 2 4822 4811  
Fax: +421 2 4822 4823  
E-mail: [ecm@ecm.sk](mailto:ecm@ecm.sk)  
[www.ecmonitoring.com](http://www.ecmonitoring.com)

Fuel Treatment Rate Part	Diesel/Bio-Diesel		Heavy Oil	
	GPM	LPM	GPM	LPM
FHD-5-19-1.5	5	19	4	13
FHD-10-38-1.5	10	38	7	26
FHD-15-57-1.5	15	57	11	40
FHD-20-76-1.5	20	76	14	53
FHD-25-95-1.5	25	95	18	66
FHD-30-114-2	30	114	21	79
FHD-40-151-2	40	151	28	106
FHD-50-189-2	50	189	35	132
FHD-60-227-2	60	227	42	159
FHD-70-265-2	70	265	49	185
FHD-80-303-2	80	303	56	212
FHD-90-341-2	90	341	63	238
FHD100-379-2	100	379	70	265
FHD110-416-2	110	416	77	291
FHD120-454-3	120	454	84	318