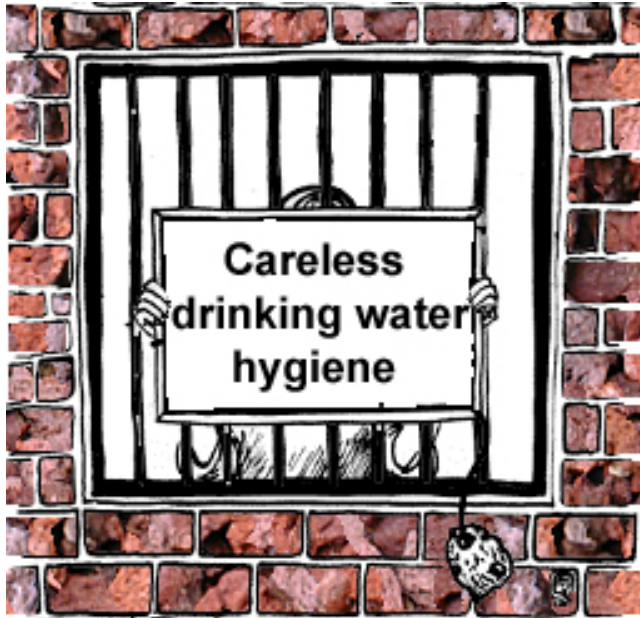


DRINKING-WATER HYGIENE

The system solution for your hospital

Problem

In reference to the new drinking water rule (TrinkwV 2001) the operating company of public buildings is responsible for **100% germfree** drinking water in the water pipes of the house up to the extraction point – with all legal effects!



Main reason for germs in the drinking water is bio film in the pipe system which is a good culture medium for Legionella and other pathogens.

State-of-the-art

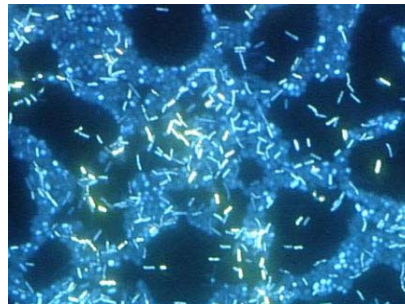
Physically based disinfection systems e.g. the thermal disinfection are not able to eliminate the germ problem in the drinking water.

Chlorine dioxide (ClO₂) is known for its high disinfection capacity in drinking water since many decades.

Because of the impossibility of a trust worth control of the chlorine dioxide in water it was possible to be used for disinfection only in limited cases.

Answer

The Aquacon-System is the complete solution for safe drinking-water-disinfection with chlorine dioxide. It consists of the ClO₂ generator Aquacon WH01, the automatically chlorine dioxide analyser Aquacon ClO₂ and the portable analyser case Aquacon-P ClO₂.



Bio film from stainless steel tank

Chlorine dioxide is allowed to disinfect drinking water due to §11 of the TrinkwV 2001 and DIN EN 12671. It removes bio film from water pipes and eliminates all germs.

Aquacon WH01

fully automatically chlorine dioxide generating system according to the hypochloric acid - sodium chlorite method

- Chlorine dioxide is generated according to DIN EN 12671
- Chemical reaction takes place under water without chlorine-gas emission
- Fail-safe technique due to redundant control of all process steps
- Reliable and low-maintenance operation



Aquacon WH01 Chlorine dioxide measuring

31 years process analyzers

Economically priced water analysis devices...
That is our credo!

Since 1973 we are engaged in developing
and manufacturing of water analysis
systems.

Take your benefit from our over 31 years
knowledge in this technology.
We offer a wide range of systems to
measure different water parameters.

Another focus of our company is water
disinfection with the controlled use of
chlorine dioxide. We protect you from germs
and Legionella by removing bio film from
your water system.

If you wish we can develop custom made
water analysis systems for your chemicals.

ECM ECO Monitoring

Aquacon CIO2

Cyclic automatic analyzer for chlorine
dioxide in drinking water systems.

The analysis is based on the Iotronic-
method with the following advantages:

- Selective analysis of chlorine dioxide
concentration in the range of 0,02 – 1 mg/l
- Better accuracy than the measuring
method based on DIN EN 12671 in the for
the TrinkwV 2001 relevant measuring
range
of 0,1 mg/l up to 0,3 mg/l
- Measuring accuracy according to the
DIN EN 12671 (certificate of conformity of
Institut für Technische Chemie der
Universität Hannover)
- Enables the documentation of the
analyzing
results according to §11, table 1 of the
TrinkwV 2001

Aquacon-P CIO2

Enables you to analyze chlorine dioxide
concentration on site at every extraction
point of your water pipes.

**With a chlorine dioxide concentration
>0,05 mg/l at the extraction point of
the water system, you can be sure of
disinfected water.**



Aquacon CIO2 chlorine dioxide analyser



Aquacon-P CIO2 mobile CIO2 analyser case