

CONTROL OF THE NON-RADIOACTIVITY OF WASTES



Detection equipment: WRM

Radiation related incidents occur too regularly. In order to ensure **safety**, we have developed a **detection equipment « Waste Radiation Monitoring »**, which detects the presence of natural or artificial radioactive elements transmitting a radiation of type γ (gamma) suspected to be present in the wastes.

Advantages of the « WRM » solution:

Significant decrease in holding costs

Simple communicative solution

Advanced and adaptable



Features

Geometry of measurement

The equipment is adapted to the type of wastes to be controlled and to the transportation system. The installation comprises two to eight detectors constituted of scintillation counters of high sensibility.

Concentrator of signals

The concentrator treats the signals coming from the detectors. The communication with the exploitation station is assured by a connection RS422 or WIFI.

Software management

The software management system « GAMMA SCAN » uses Windows from Microsoft and represents numerous advantages:

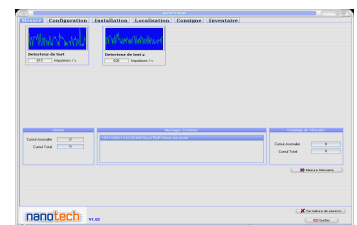
Convenience - Evolution according to the needs - Help online

Options

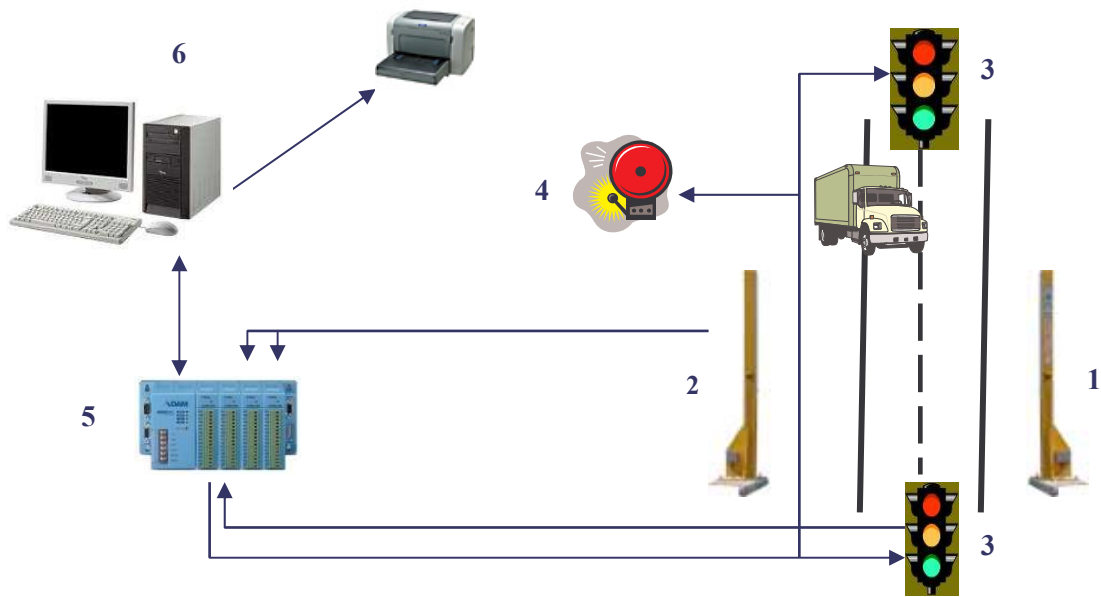
Tele-maintenance (Through annual contract inscription) - Video-surveillance - Printing of the outcomes

Communication to other systems

Integration of intervention procedures and ability to detect the events



Installation principles



1 / 2: Cell to detect the presence of a vehicle - scintillator detectors – 3: Traffic light (option) – 4: Alarm sound - 5: Concentrator of signals – 6: Exploitation station.

Specifications

	WRM-10	WRM-20	WRM-30
Number of detectors	1	2	3
Volume per detector (liters)	3	3 - 4,5 - 6*	3 - 4,5 - 6*
Exploitation station	no	yes	yes
GAMMA SCAN software	Incorporated	1.02	1.02
Number of exits	6 (option)	6 (option)	6 (option)
Number of entries	8	8	8
Measurement of speed	Yes (option)	Yes (option)	Yes (option)
Tele-maintenance	Yes (option)	Yes (option)	Yes (option)

*Detectors with a higher volume possible